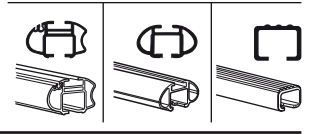
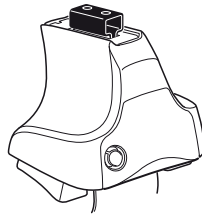


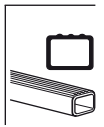
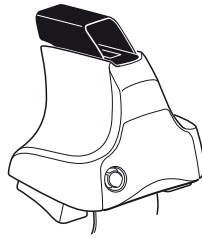
Kit 1092

MERCEDES BENZ CLK (W208), 2-dr Coupé, 97-02

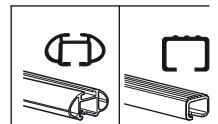
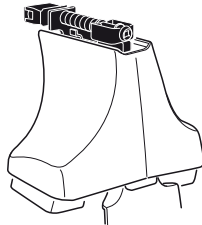
480R
754



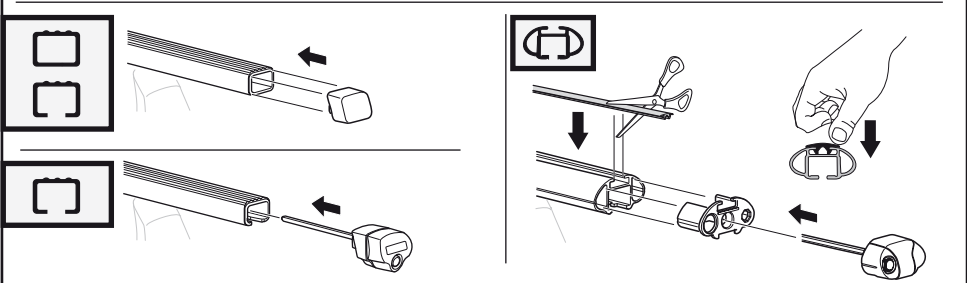
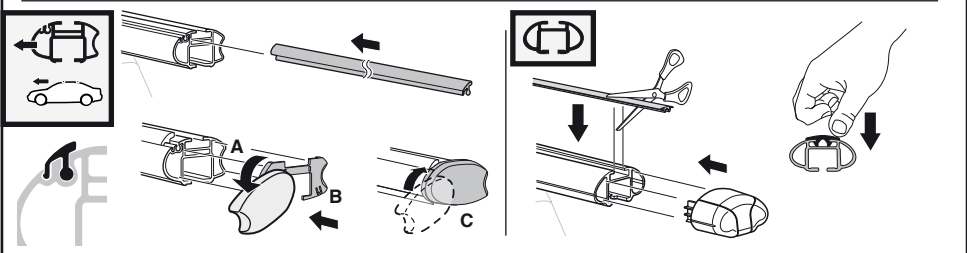
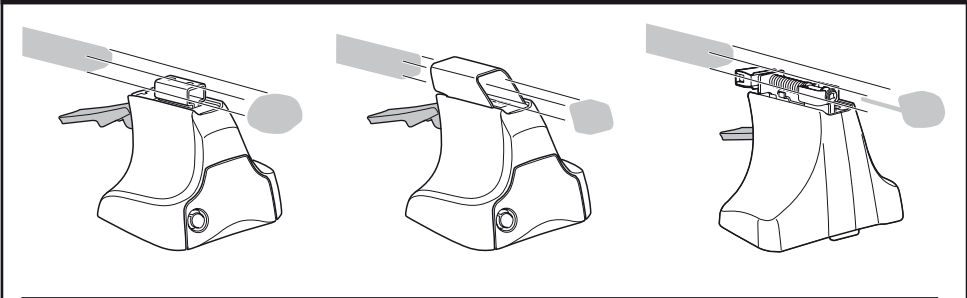
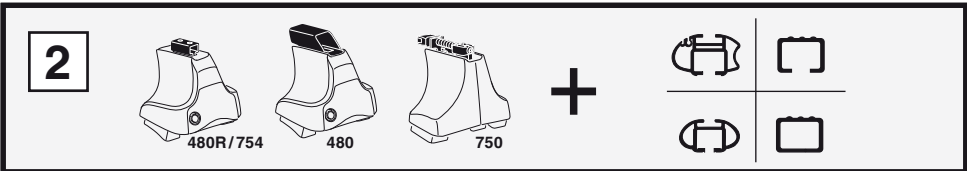
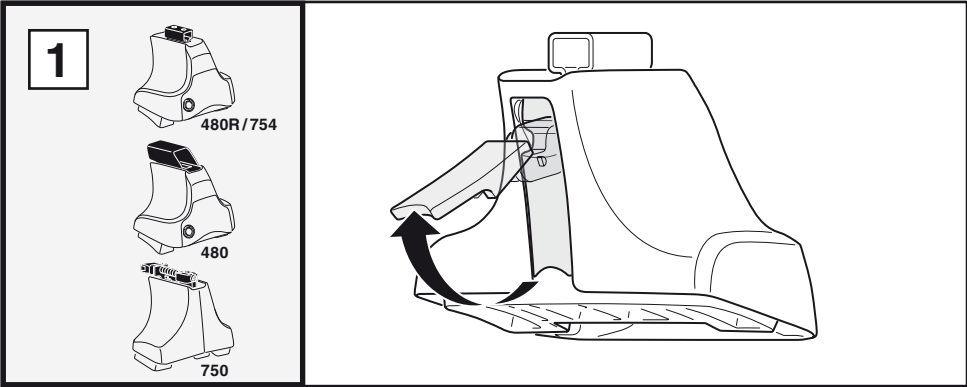
480



750



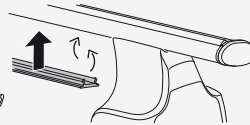
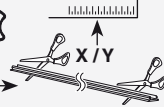
Kit



3



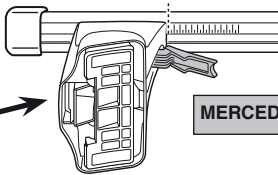
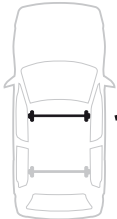
754



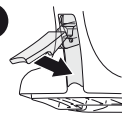
750



1



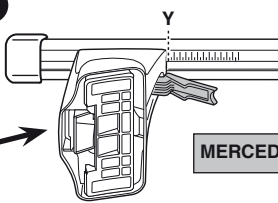
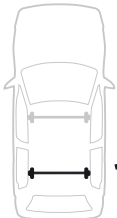
2



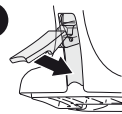
MERCEDES BENZ CLK (W208), 2-dr Coupé, 97-02

X
29,5

1



2



MERCEDES BENZ CLK (W208), 2-dr Coupé, 97-02

Y
28

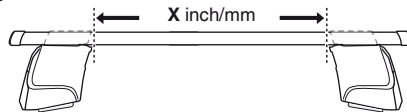
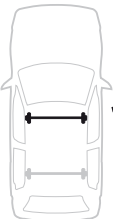


480R

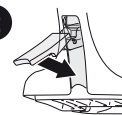


480

1



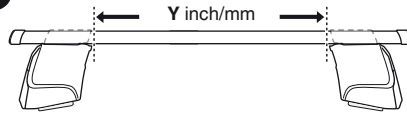
2



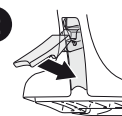
MERCEDES BENZ CLK (W208), 2-dr Coupé, 97-02

X inch **X mm**
37 1/4" **946 mm**

1



2

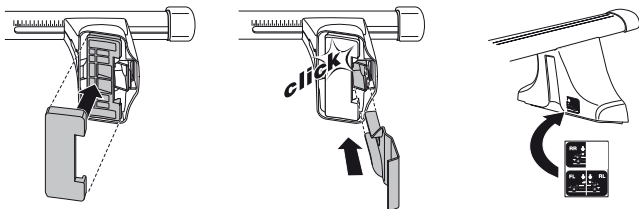
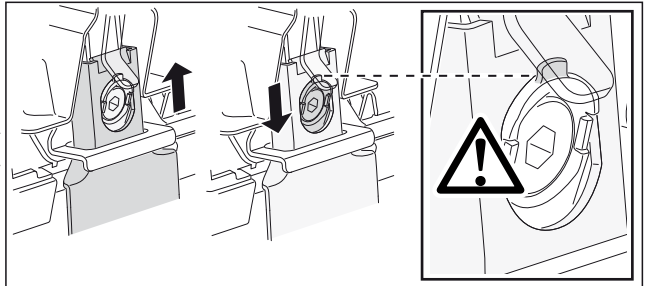
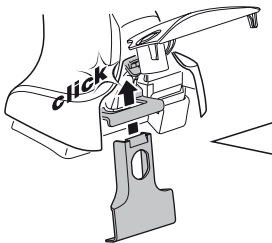
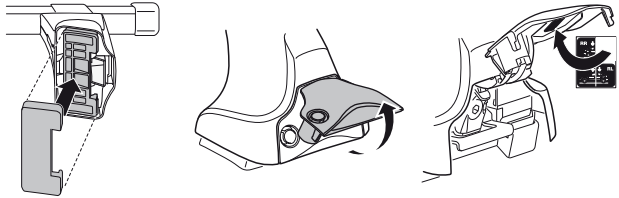
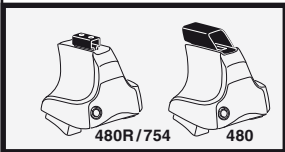
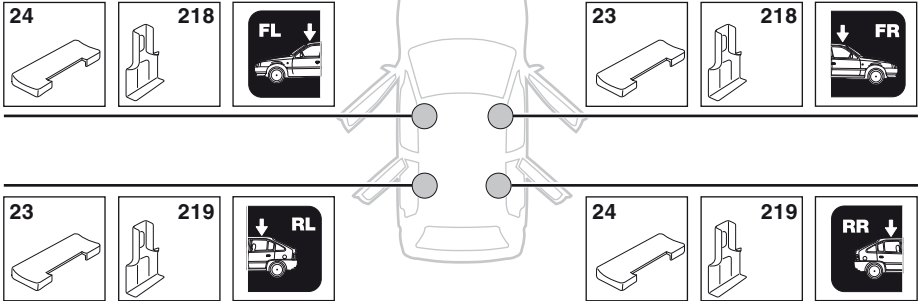


MERCEDES BENZ CLK (W208), 2-dr Coupé, 97-02

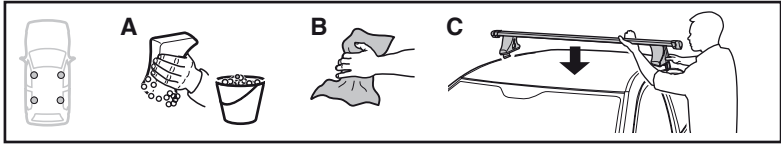
Y inch **Y mm**
36 5/8" **931 mm**

4

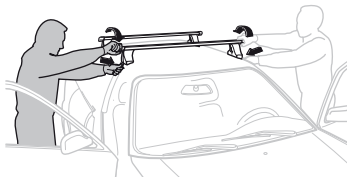
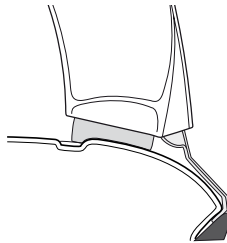
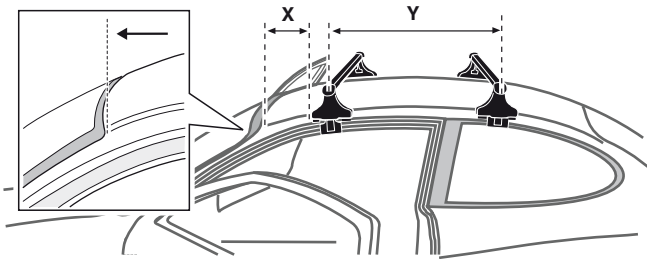
MERCEDES BENZ CLK (W208), 2-dr Coupé, 97-02



5



	X mm	Y mm	X inch	Y inch
MERCEDES BENZ CLK (W208), 2-dr Coupé, 97-02	190 mm	630 mm	7 1/2"	24 3/4"



GB/US Tighten alternately

D Die Schrauben abwechselnd anziehen

F Serrer alternativement chaque côté

NL Afwisselend aan de linker- en de rechterkant aandraaien

I Alternare il serraggio delle viti

E Apertar alternativamente

PT Aperte alternadamente

S Dra åt växelvis

FIN Kierrä vuorotellen

EST Pinguldage vaheldumisi

LAT Pielieciet pamišus

LIT Užsukinėkite pakaitomis

PL Śruby dokręcaj naprzemiennie

RU Затягивайте попеременно

CZ Pokręťta bagažníka dokręcaj dokręcaj naprzemiennie.

SK Doťahujte striedavo

SLO Privijajte izmenično.

HR Naizmjenično zategnite

HU Egymástól függetlenül szorítandó

GR Σφιγγετε εναλλάξ

TR Dönüşümlü sıkın

中文 交替拧紧

한국어 번갈아 가며 조이십시오.

日本語 交互に締め付けてください。

ไทย ชันในแบบสลับ

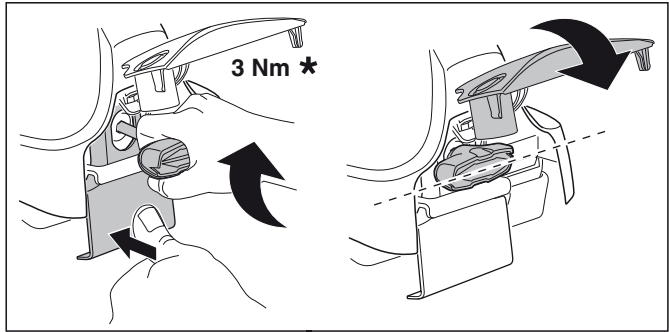
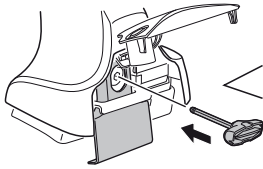
6



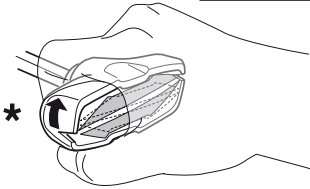
480R/754



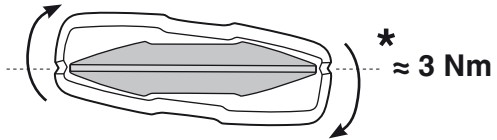
480



3 Nm *



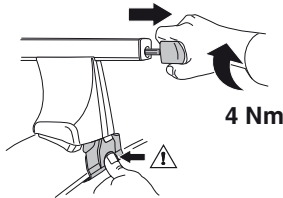
*



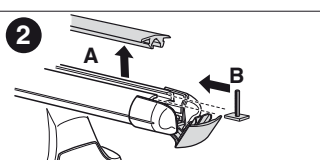
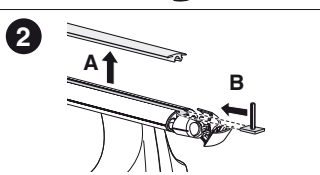
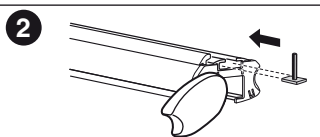
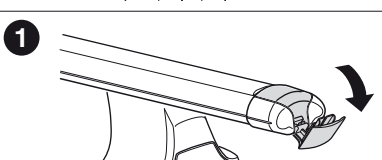
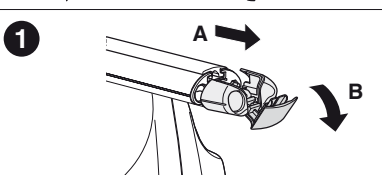
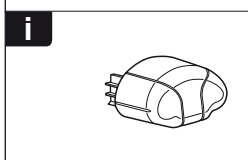
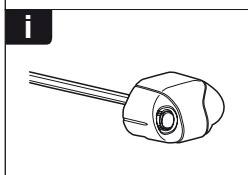
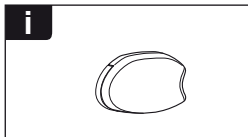
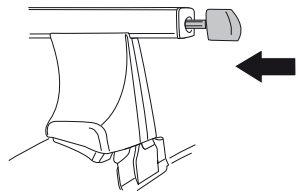
* ≈ 3 Nm

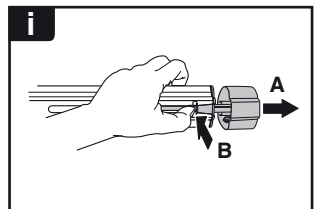
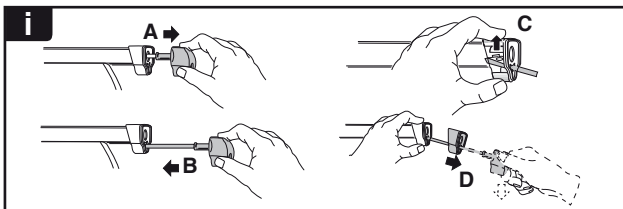
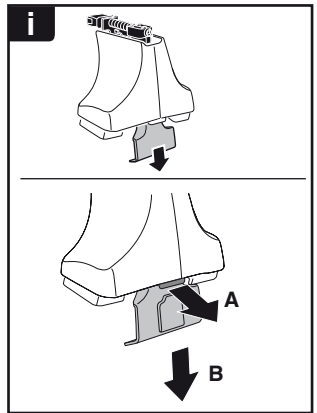
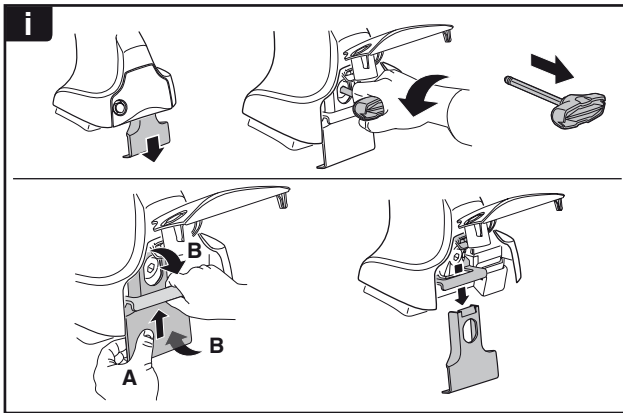
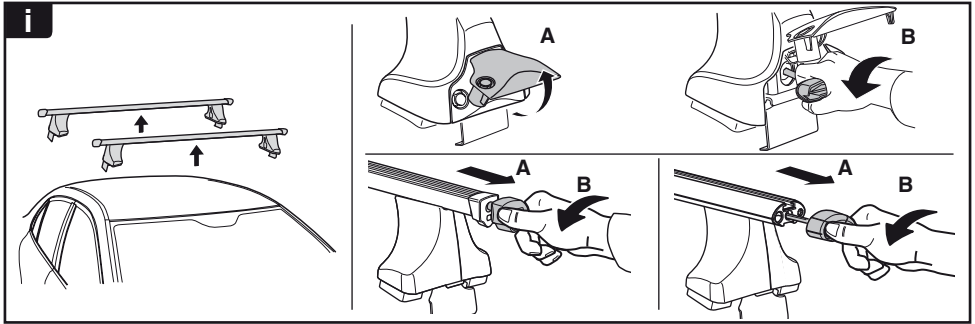


750

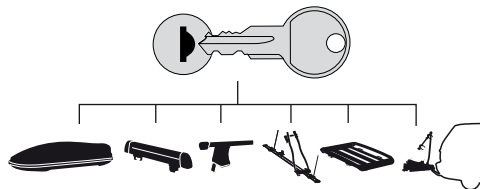


4 Nm

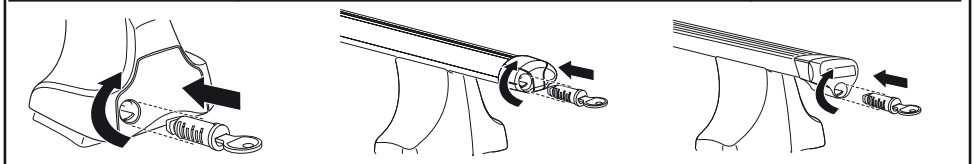




THULE
SWEDEN
**ONE
KEY
SYSTEM**



- 544 (x4)
- 596 (x6)
- 588 (x8)
- NA 510 (x10)
- EUR 452 (x12)
- ASIA 452 (x12)



WW ▶ Thule Sweden AB, Box 69, 330 33 Hillerstorp, SWEDEN
NA ▶ Thule Inc., 42 Silvermine Road, Seymour, Connecticut 06483, USA

info@thule.com
customer.service@thule.com

www.thule.com