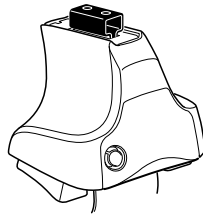
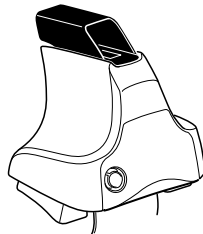
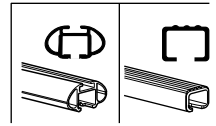


Kit 1369

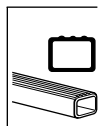
VOLVO V50, 5-dr Estate, 04–
VOLVO V50, 5-dr Wagon, *05-10
*North America



754 Rapid System
480R Rapid Traverse (North America)



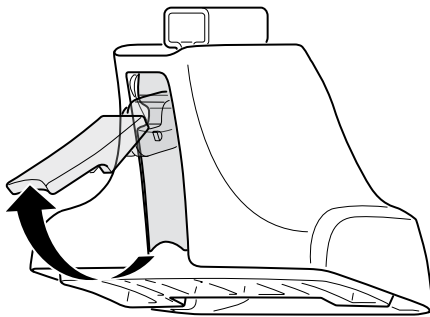
480 Traverse (North America)



754 Rapid System
480R Rapid Traverse (North America)

480 Traverse (North America)

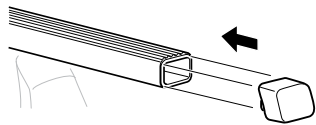
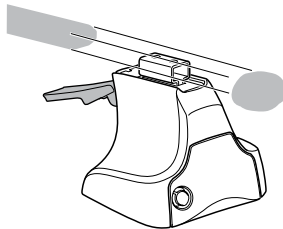
1



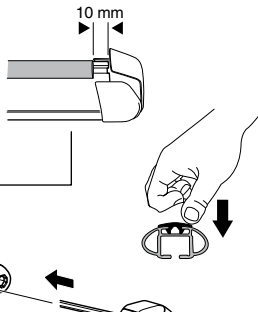
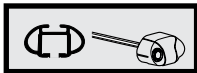
2



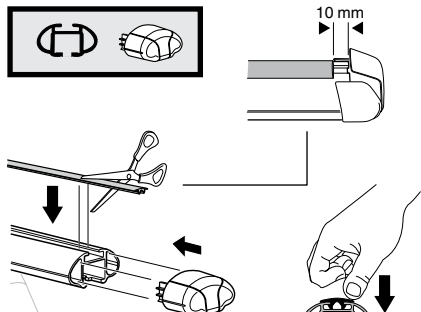
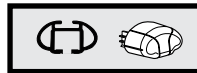
754 Rapid System
480R Rapid Traverse
(North America)



x4



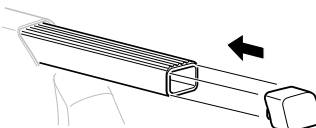
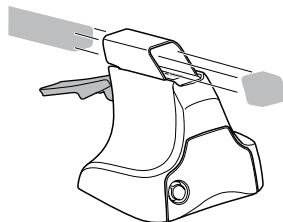
x4



x4

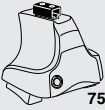


480 Traverse
(North America)

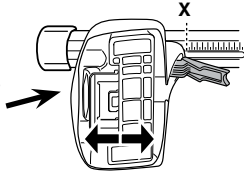


x4

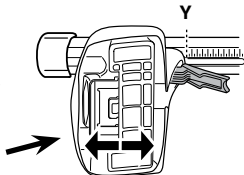
3



754 Rapid System



	X
VOLVO V50, 5-dr Estate, 04–	41
VOLVO V50, 5-dr Wagon, *05-10	41



	Y
VOLVO V50, 5-dr Estate, 04–	37
VOLVO V50, 5-dr Wagon, *05-10	37

3

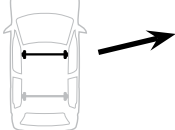


480R Rapid Traverse

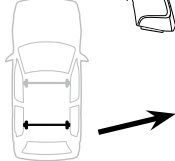


480 Traverse

(North America)

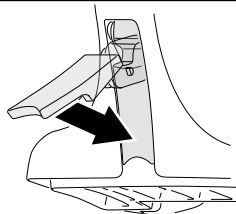


	X inch	X mm
VOLVO V50, 5-dr Estate, 04–	41 3/4"	1061 mm
VOLVO V50, 5-dr Wagon, *05-10	41 3/4"	1061 mm



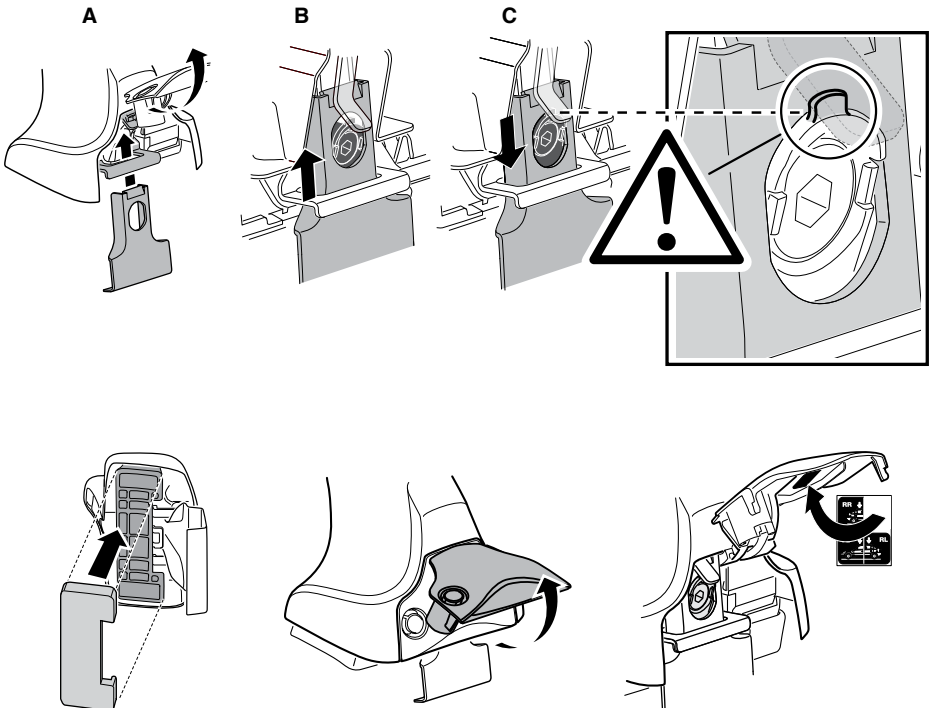
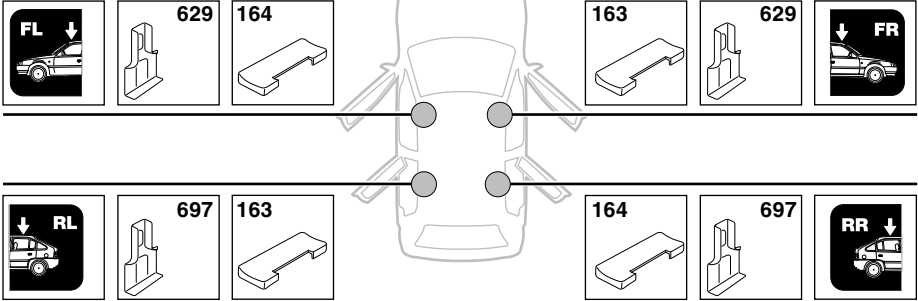
	Y inch	Y mm
VOLVO V50, 5-dr Estate, 04–	40 1/4"	1021 mm
VOLVO V50, 5-dr Wagon, *05-10	40 1/4"	1021 mm

4

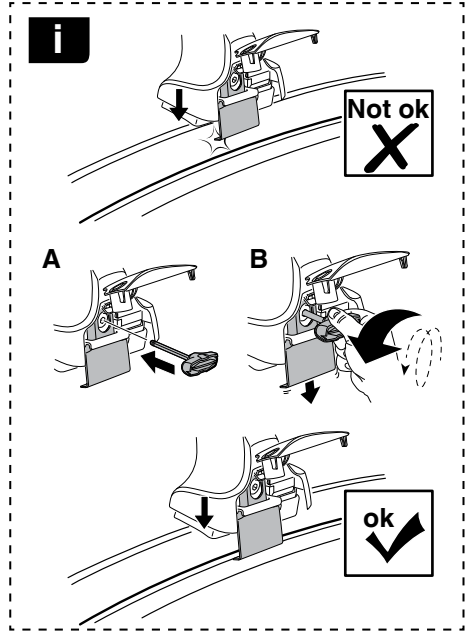
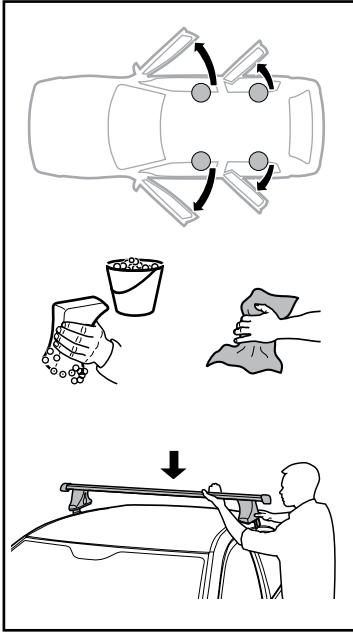


5

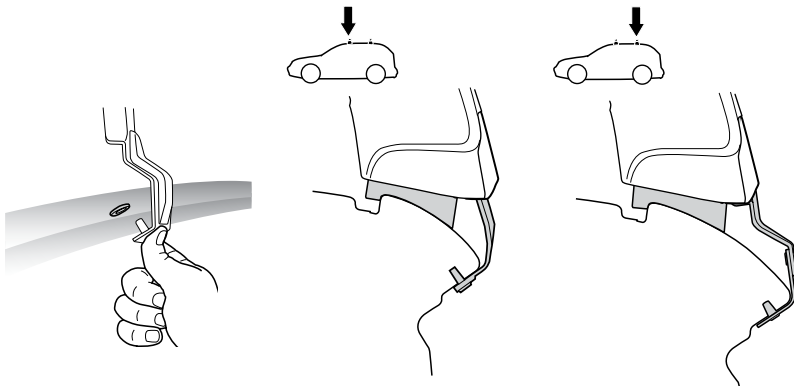
VOLVO V50, 5-dr Estate, 04-
VOLVO V50, 5-dr Wagon, *05-10



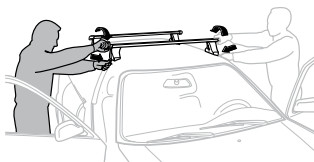
6



	X mm	Y mm	X inch	Y inch
VOLVO V50, 5-dr Estate, 04-	225 mm	800 mm	8 ⁷ / ₈ "	31 ¹ / ₂ "
VOLVO V50, 5-dr Wagon, *05-10	225 mm	800 mm	8 ⁷ / ₈ "	31 ¹ / ₂ "



7



GB/US Tighten alternately
 D Die Schrauben abwechselnd anziehen
 F Serrer alternativement chaque côté
 NL Afwisselend aan de linker- en de rechterkant aandraaien
 I Alternare il serraggio delle viti
 E Apretar alternativamente
 PT Aperte alternadamente
 S Dra åt växelvis
 FIN Kierrä vuorotellen
 EST Pinguldage vaheldumisi
 LAT Pieļieciet pamišus
 LIT Užsukinėkite pakaitomis
 PL Śruby dokręcaj naprzemiennie
 RU Затягивайте попеременно

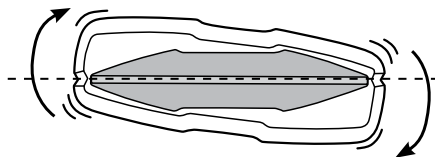
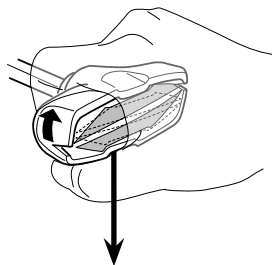
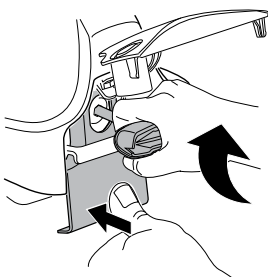
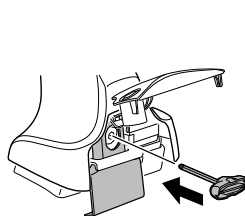
CZ Pokręťta bagażnika dokręcaj naprzemiennie.
 SK Dofahajte striedavo
 SLO Privijajte izmenično.
 HR Naizmjenično zategnite
 HU Egymástól függetlenül szorítandó
 GR Σφιγίγτες εναλλάξ
 TR Dönüşümlü sıkın

中文 交替拧紧

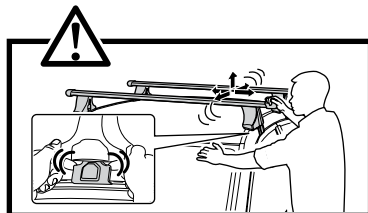
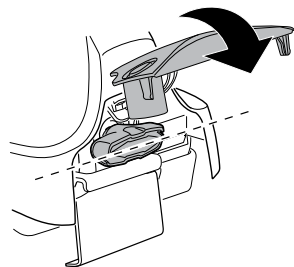
한국어 번갈아 가며 조이십시오.

日本語 交互に締め付けてください。

ไทย ชันในแบบสลับ



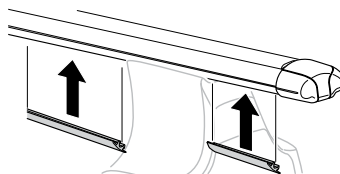
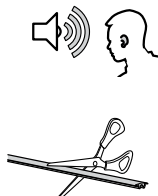
≈ 3 Nm

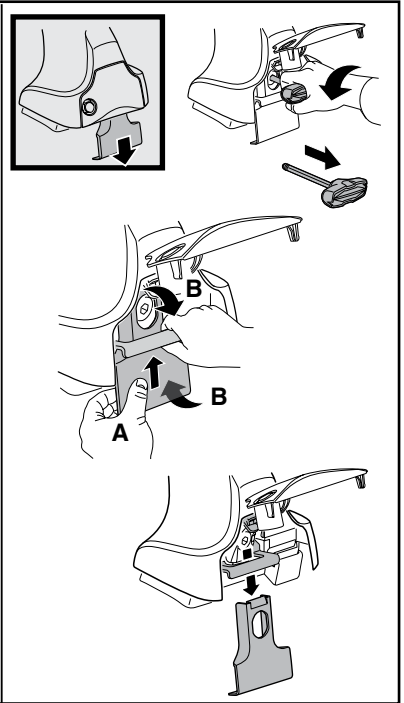
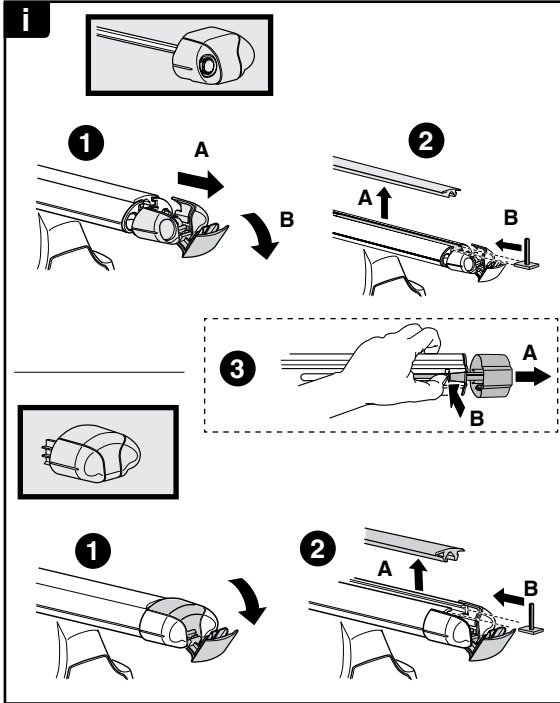
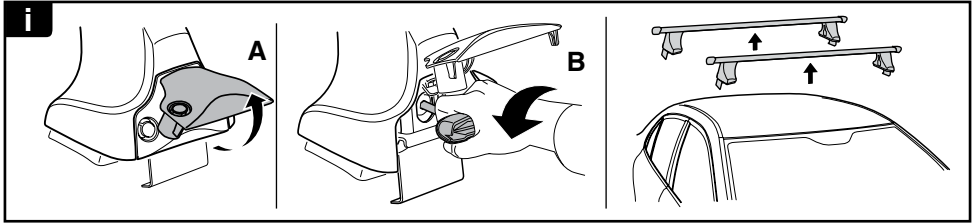


8

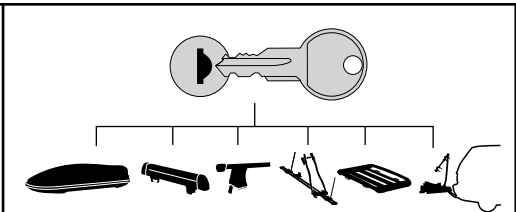


x1
17 mm

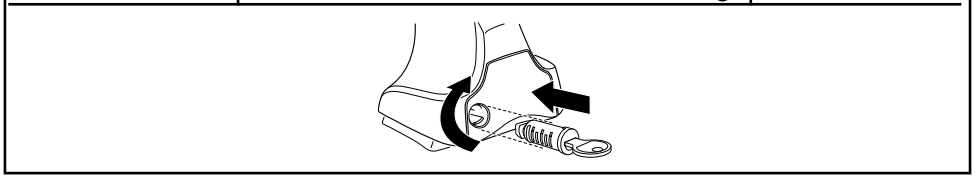




THULE
SWEDEN
**ONE
KEY
SYSTEM**



		(x4)
		(x6)
		(x8)
NA		(x10)
EUR		(x12)
ASIA		



WW ▶ Thule Sweden AB, Box 69, 330 33 Hillerstorp, SWEDEN
NA ▶ Thule Inc., 42 Silvermine Road, Seymour, Connecticut 06483, USA

info@thule.com
customer.service@thule.com

www.thule.com